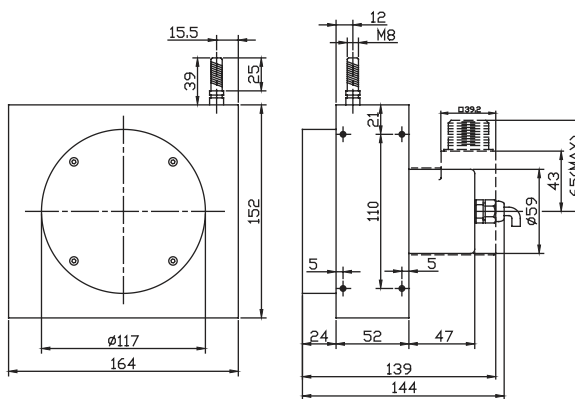


# HLS-L



## ◀ LINEAR WIRE ENCODER ▶

### ELECTRICAL SPEC.

Detection System	Incremental
Output Wave	Square Wave
Stroke (mm)	6000, 7000, 8000, 9000, 10000, 11000, 12000
Resolution (mm/pulse)	1, 0.5 (Others by request)
Accuracy	±0.05% FS, ±1 count;
Output Phase	AB or ABZ phase
Electronics	Voltage , Open Collector , Push Pull or Line Driver
Power Supply	DC 8~26V, DC 5V fixed
Current Consumption	≤ 60 mA
Output Capacity	Sync. Current: 20 mA, Residual Voltage: 0.5V or less
Max. Response	10K Hz ~ 50K Hz
Phase Different	A, B phase different 90°±45° (T/4±T/8), Z phase T±T/2
Wave Form Rise / Fall	2 μs or less

### MECHANICAL SPEC.

Wire specification	Material: SUS304 with nylon coating Diameter: 1.0 mm; Breaking load: 60 Kg, 2.54 g/m
Starting Torque (at 25°C)	Max.: 2.5 kg; Min.: 1 kg
Max. Travel Speed	1,000 mm / sec.
Vibration	10g (10± 1,500 Hz)
Polarity	Against Reverse Protection (not with 5V)
Shock	20g per 11 ms
Cable	Ø5.4, 100 cm long
Weight	< 3,500 g
Starting Torque on Spring	1,500 ~ 2,000 g

### ENVIRONMENTAL SPEC.

Operating Temp. / Humidity	-10°C ~ 60°C, RH 35% ~ 90% (No Condensation)
Storage Temp.	-20°C ~ 80°C
Protection	IP 64 (only for encoder housing)
Life	Typical > 1 X 10 <sup>6</sup> cycles

### ORDERING INFORMATION

<b>HLS-L</b>	Measuring Range	Resolution	Output Phase	Electronics	Supply Voltage	Connection
	e.g. <b>90</b> : 9000 mm <b>100</b> : 10000 mm	e.g. <b>1</b> : 1 mm <b>05</b> : 0.5mm	<b>Blank</b> : AB phase <b>*Z</b> : ABZ phase	<b>Blank</b> : Voltage <b>C</b> : Open-Collector <b>PP</b> : Push-Pull <b>*L</b> : Line Driver 5 Vdc <b>*HL</b> : Line Driver 8~26 Vdc	<b>Blank</b> : 8~26 Vdc <b>5V</b> : 5 Vdc fixed	<b>Blank</b> : Axial Cable <b>*R7</b> : Radial 7 pin <b>*R10</b> : Radial 10 pin